

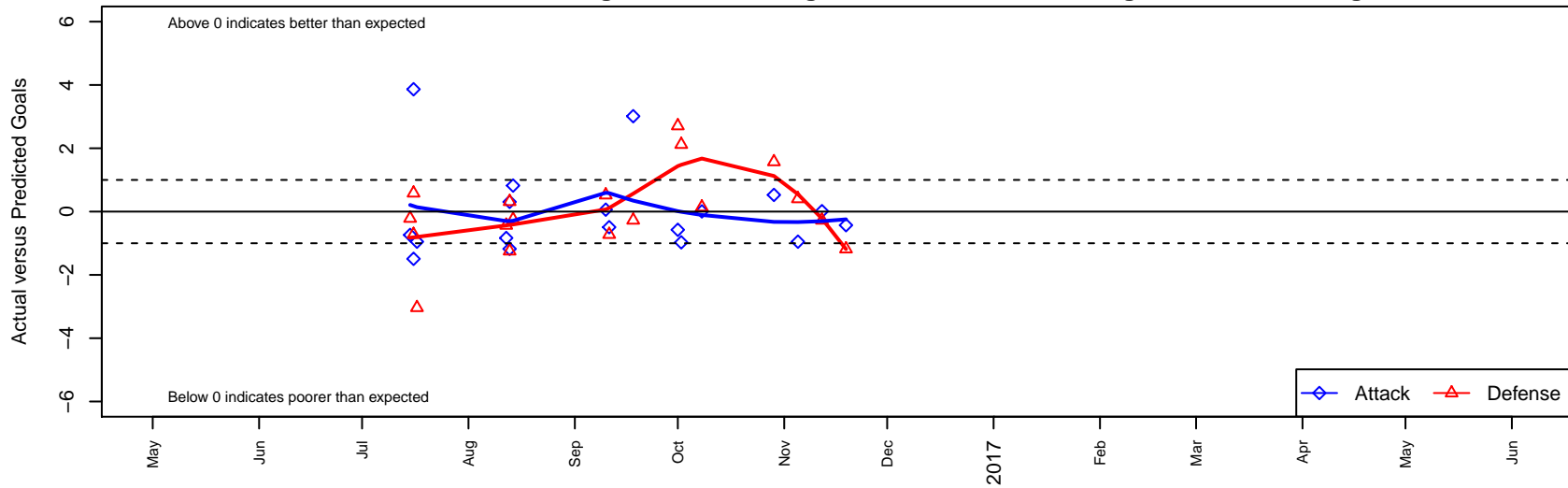
# SGESC Fusion B03

Spanaway Graham Eatonville SC  
 Graham, WA  
 B03 total strength=715  
 attack=0.82 defense=0.67  
 fall league = PSPL Copa U14  
 notes= Derrickson 2016

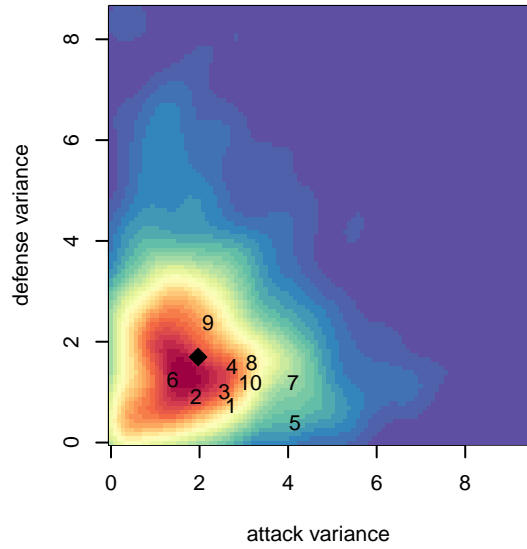
alt names used:  
 SGEO Fusion B03  
 SGEO Fusion [B]03  
 SGEOSC Fusion03' Derrickson

Venues played:  
 2016 KITG BU14 Red  
 2016 Blast Off B2003-04 C  
 2016 PSPL Copa U14

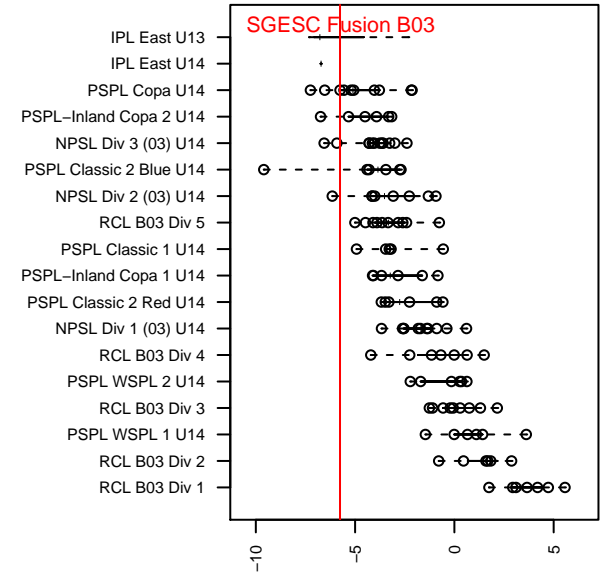
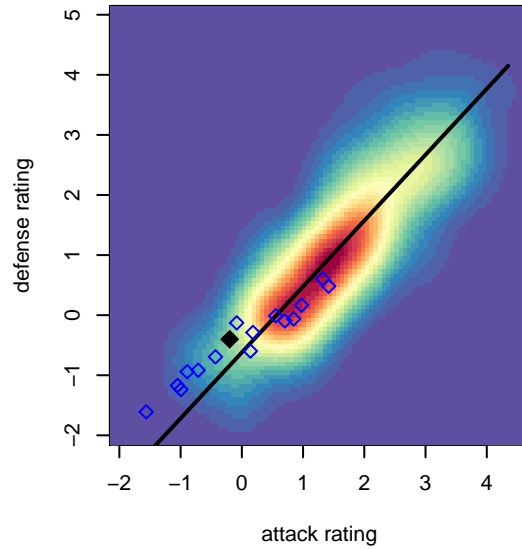
**SGESC Fusion B03**  
 Dots are actual minus expected GF (blue circles) and GA (red triangles).  
 Blue line is smoothed change in attack strength. Red is smoothed change in defense strength.



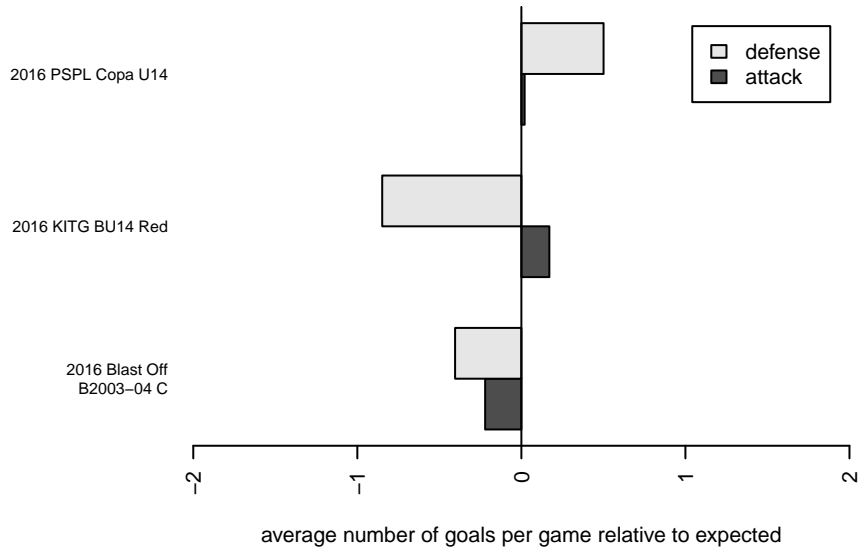
**attack and defense variance (black dot)  
relative to other teams  
and top 10 in region**



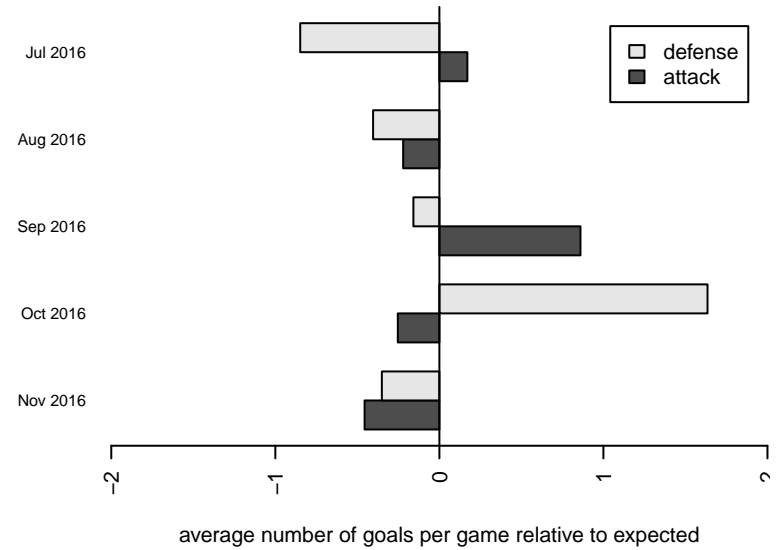
**attack and defense rating  
relative to others at age  
and all opponents in last 13 months**



**Performance relative to 13 month average**



**Performance relative to 13 month average**



| <b>date</b> | <b>home</b>                        |   | <b>away</b>             |   | <b>venue</b>              | <b>pred.home</b> | <b>pred.away</b> |
|-------------|------------------------------------|---|-------------------------|---|---------------------------|------------------|------------------|
| 2016-11-19  | SGESC Fusion B03                   | 0 | Kent City Black B03     | 8 | 2016 PSPL Copa U14        | 0.43             | 6.82             |
| 2016-11-12  | South Kitsap United B03            | 1 | SGESC Fusion B03        | 2 | 2016 PSPL Copa U14        | 0.73             | 1.99             |
| 2016-11-05  | SGESC Fusion B03                   | 0 | Impact FC Black B03     | 3 | 2016 PSPL Copa U14        | 0.95             | 3.40             |
| 2016-10-29  | SGESC Fusion B03                   | 2 | TC United White B03     | 0 | 2016 PSPL Copa U14        | 1.47             | 1.57             |
| 2016-10-08  | ISC Gunners Select B03             | 2 | SGESC Fusion B03        | 1 | 2016 PSPL Copa U14        | 2.14             | 0.99             |
| 2016-10-02  | LWPFC White Barracudas B03         | 1 | SGESC Fusion B03        | 0 | 2016 PSPL Copa U14        | 3.12             | 0.97             |
| 2016-10-01  | Fuerza FC Academy B03              | 3 | SGESC Fusion B03        | 0 | 2016 PSPL Copa U14        | 5.71             | 0.57             |
| 2016-09-18  | SGESC Fusion B03                   | 5 | South Kitsap United B03 | 1 | 2016 PSPL Copa U14        | 1.99             | 0.73             |
| 2016-09-11  | SGESC Fusion B03                   | 1 | West Narrows Red B03    | 2 | 2016 PSPL Copa U14        | 1.49             | 1.28             |
| 2016-09-10  | Seattle Celtic Orange B03          | 1 | SGESC Fusion B03        | 1 | 2016 PSPL Copa U14        | 1.52             | 0.94             |
| 2016-08-14  | FWFC Select B04                    | 1 | SGESC Fusion B03        | 3 | 2016 Blast Off B2003-04 C | 0.75             | 2.18             |
| 2016-08-13  | Impact FC White B04                | 0 | SGESC Fusion B03        | 5 | 2016 Blast Off B2003-04 C | 0.31             | 4.69             |
| 2016-08-13  | FWFC Select B04                    | 2 | SGESC Fusion B03        | 1 | 2016 Blast Off B2003-04 C | 0.75             | 2.18             |
| 2016-08-12  | SGESC Fusion B03                   | 2 | FC Bellevue B04         | 1 | 2016 Blast Off B2003-04 C | 2.83             | 0.57             |
| 2016-07-17  | Seattle United Shoreline White B03 | 5 | SGESC Fusion B03        | 0 | 2016 KITG BU14 Red        | 1.96             | 0.95             |
| 2016-07-16  | SGESC Fusion B03                   | 0 | West Narrows Red B03    | 2 | 2016 KITG BU14 Red        | 1.49             | 1.28             |
| 2016-07-16  | SGESC Fusion B03                   | 7 | FPSC Mighty Dragons B03 | 0 | 2016 KITG BU14 Red        | 3.14             | 0.58             |
| 2016-07-15  | GHYSA Real Pacific Jr B03          | 4 | SGESC Fusion B03        | 0 | 2016 KITG BU14 Red        | 3.78             | 0.74             |